



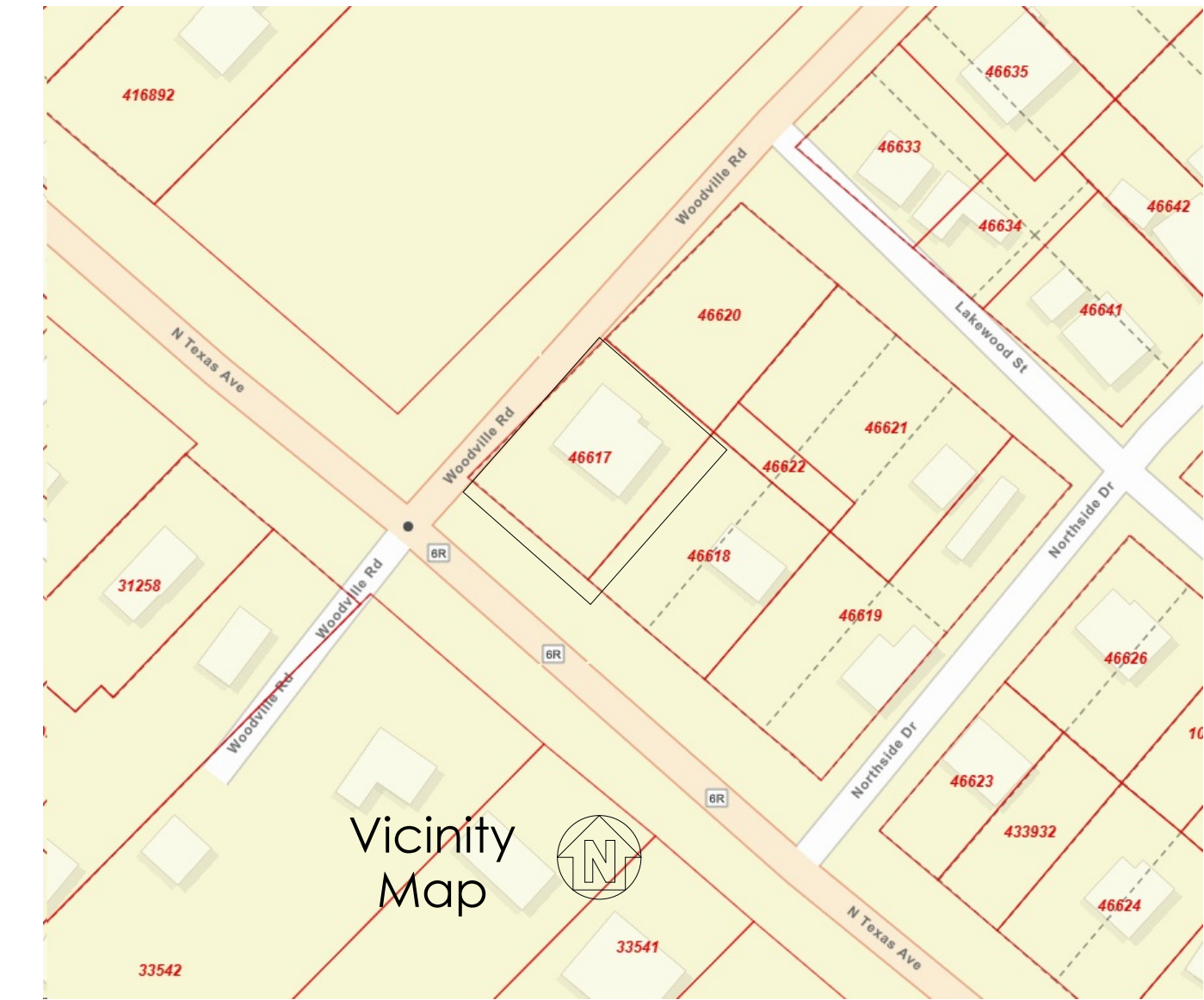
To the best of my knowledge these plans are true and correct. I am not responsible for any errors or omissions on these plans. The contractor shall be responsible for verifying all dimensions and conditions shown on these plans. I am not responsible for any errors or omissions on these plans. I am not responsible for any errors or omissions on these plans.

PROPOSED IMPROVEMENT
8334 SF OF BUILDING

PROPOSED REQUIRED PARKING 34 SF RETAIL
TOTAL REQUIRED PARKING = 34

TOTAL AT PUMP PARKING = 10
TOTAL STRAIGHT PARKING = 27
TOTAL ADA = 2

TOTAL PROVIDED = 37



Lampo's Grocery

4311 North Texas Ave Bryan, TX 77803
Proposed Pre-Engineered Metal Building

FOR REVIEW ONLY



09/09/24
Robert K. Balfour, PE
TX Firm # F-22696
244 Private Road 435
Doyon, TX 77535
Cell: 409-926-4439

OWNERSHIP OF DOCUMENTS
DESIGNS INCORPORATED HEREIN, AS AN INSTRUMENT OF PROFESSIONAL SERVICE, IS THE PROPERTY OF BENCHMARK PLANS & ASSOCIATES, LLC. FOR ANY OTHER PROJECT WITHOUT THE WRITTEN AUTHORIZATION OF BPAALC.

MARK	DESCRIPTION	DATE
REVISIONS:		
AU		07/16/24
AU		08-05-24
AU		08-26-24
AU		09-09-24
AU		09-10-24

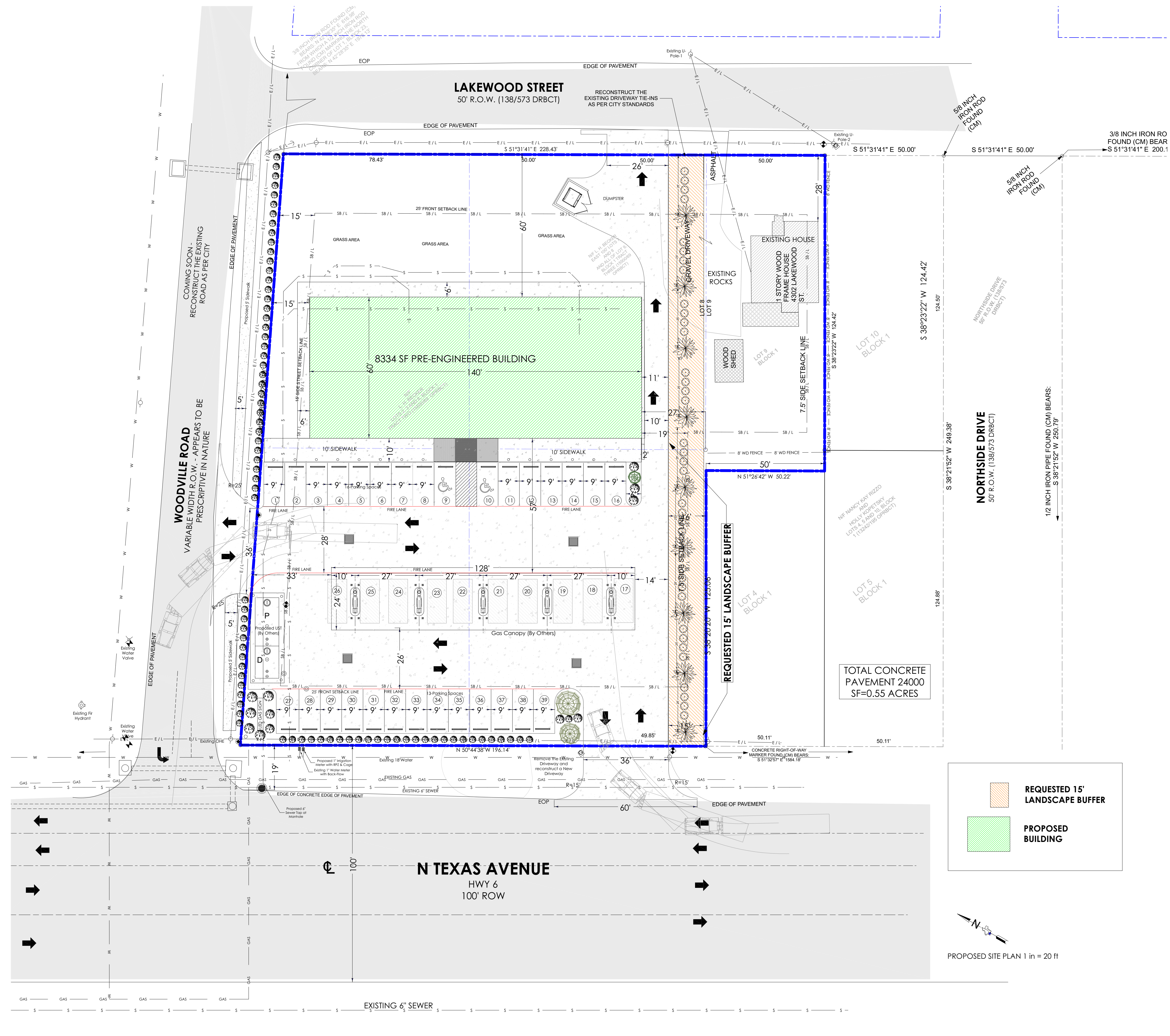
SCALE: AS SHOWN

Proposed Concept Site Plan

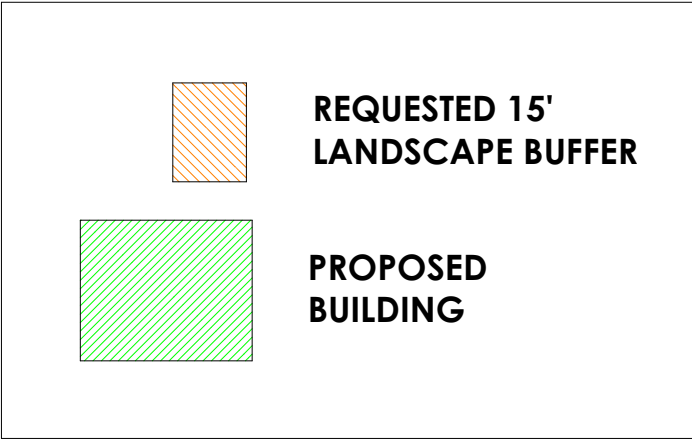
DRAWN BY: CS
CHECKED BY: CS & RB
DATE OF ISSUE: 08/25/24
PROJECT NUMBER: 08-2024-AM-GRO-BRYAN-TX
SHEET NUMBER:

C-1

CITY OF BRYAN, TX ADOPTED CODES
2021 International Building Code
2021 International Existing Building Code
2018 International Energy Conservation Code
2021 International Residential Code
2021 International Fuel Gas Code
2021 Plumbing Code
2021 International Property Maintenance Code
2021 International Mechanical Code
2021 International Fire Code
2020 National Electrical Code
2020 ICC 600 Standard for Residential Construction in High Wind Regions Code



TOTAL CONCRETE PAVEMENT 24000 SF=0.55 ACRES



PROPOSED SITE PLAN 1 in = 20 ft